

5

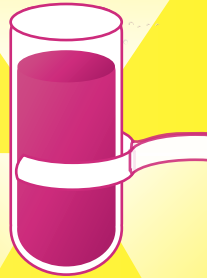
bellwether games llc 2013



Beaker: Contains a glassy orange liquid known as "melted sundial"
VIABLE ANTIDOTE?: UNKNOWN

2

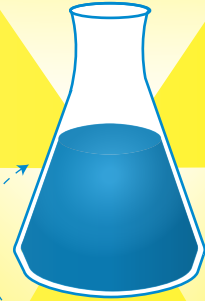
bellwether games llc 2013



Test tube: Contains a glassy fuchsia liquid known as "wild wild rose"
VIABLE ANTIDOTE?: UNKNOWN

2

bellwether games llc 2013



Erlenmeyer flask: contains a hazy aqua liquid known as "sapphire princess"
VIABLE ANTIDOTE?: UNKNOWN

4

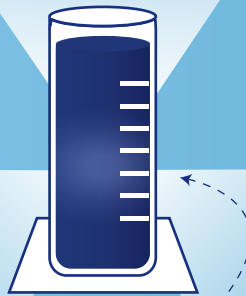
bellwether games llc 2013



Beaker: Contains a glassy orange liquid known as "melted sundial"
VIABLE ANTIDOTE?: UNKNOWN

12

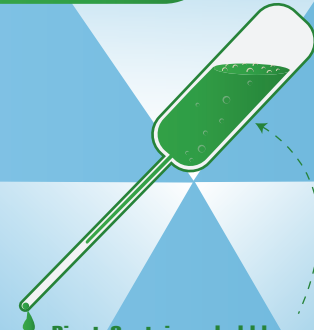
bellwether games llc 2013



Cylinder: Contains a hazy dark blue liquid known as "north sea serum"
VIABLE ANTIDOTE?: UNKNOWN

2

bellwether games llc 2013



Pipet: Contains a bubbly green liquid known as "conifer tonic"
VIABLE ANTIDOTE?: UNKNOWN

X

bellwether games llc 2013



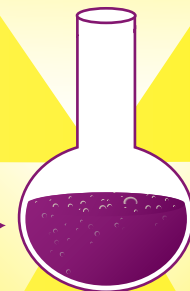
Beaker: Contains a glassy orange liquid known as "melted sundial"
VIABLE ANTIDOTE?: TOXIC!!



Syringe: Exchange this card from your hand for any player's discarded card or hand card you select randomly.

2

bellwether games llc 2013



Round-bottom flask: contains a bubbly purple liquid known as "purple-Q"
VIABLE ANTIDOTE?: UNKNOWN