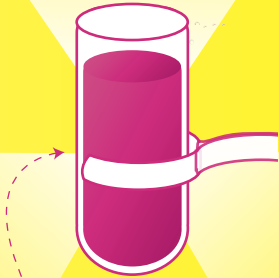


14

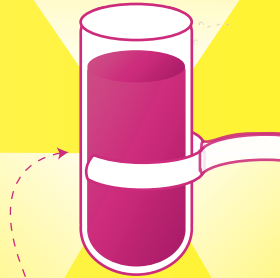
bellwether games llc 2013



Test tube: Contains a glassy fuschia liquid known as "wild wild rose"  
**VIABLE ANTIDOTE?: UNKNOWN**

13

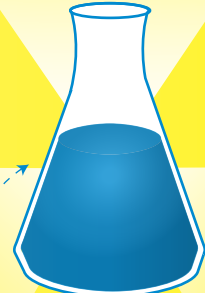
bellwether games llc 2013



Test tube: Contains a glassy fuschia liquid known as "wild wild rose"  
**VIABLE ANTIDOTE?: UNKNOWN**

13

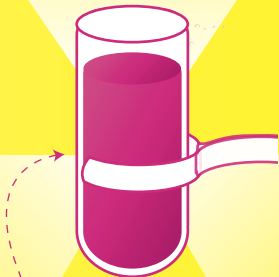
bellwether games llc 2013



Erlenmeyer flask: contains a hazy aqua liquid known as "sapphire princess"  
**VIABLE ANTIDOTE?: UNKNOWN**

15

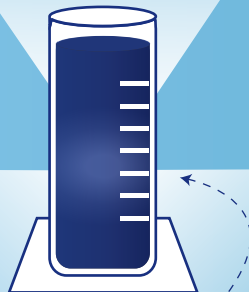
bellwether games llc 2013



Test tube: Contains a glassy fuschia liquid known as "wild wild rose"  
**VIABLE ANTIDOTE?: UNKNOWN**

13

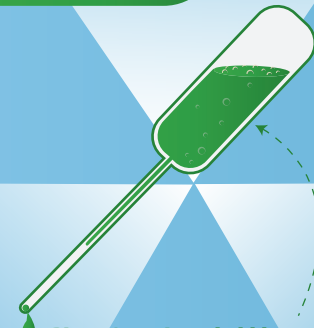
bellwether games llc 2013



Cylinder: Contains a hazy dark blue liquid known as "north sea serum"  
**VIABLE ANTIDOTE?: UNKNOWN**

13

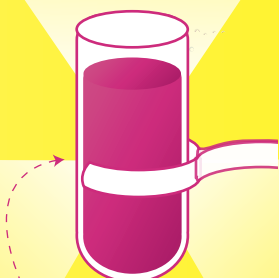
bellwether games llc 2013



Pipet: Contains a bubbly green liquid known as "conifer tonic"  
**VIABLE ANTIDOTE?: UNKNOWN**

1X

bellwether games llc 2013



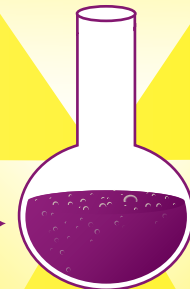
Test tube: Contains a glassy fuschia liquid known as "wild wild rose"  
**VIABLE ANTIDOTE?: TOXIC!!**



Syringe: Exchange this card from your hand for any player's discarded card or hand card you select randomly.

13

bellwether games llc 2013



Round-bottom flask: contains a bubbly purple liquid known as "purple-Q"  
**VIABLE ANTIDOTE?: UNKNOWN**