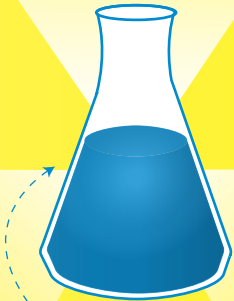


1X

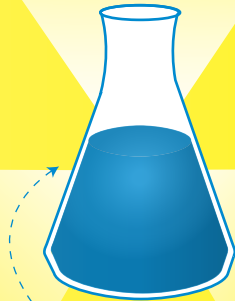
bellwether games llc 2013



Erlenmeyer flask: contains a hazy aqua liquid known as "sapphire princess"
VIABLE ANTIDOTE?: TOXIC!!

15

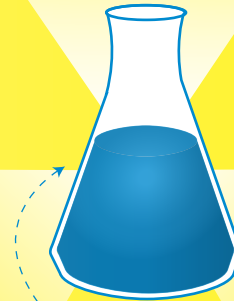
bellwether games llc 2013



Erlenmeyer flask: contains a hazy aqua liquid known as "sapphire princess"
VIABLE ANTIDOTE?: UNKNOWN

14

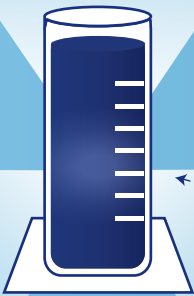
bellwether games llc 2013



Erlenmeyer flask: contains a hazy aqua liquid known as "sapphire princess"
VIABLE ANTIDOTE?: UNKNOWN

15

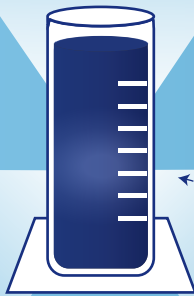
bellwether games llc 2013



Cylinder: Contains a hazy dark blue liquid known as "north sea serum"
VIABLE ANTIDOTE?: UNKNOWN

14

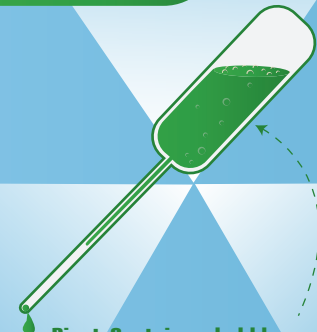
bellwether games llc 2013



Cylinder: Contains a hazy dark blue liquid known as "north sea serum"
VIABLE ANTIDOTE?: UNKNOWN

14

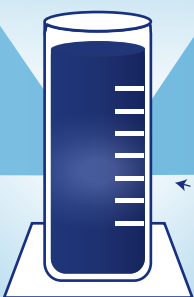
bellwether games llc 2013



Pipet: Contains a bubbly green liquid known as "conifer tonic"
VIABLE ANTIDOTE?: UNKNOWN

1X

bellwether games llc 2013



Cylinder: Contains a hazy dark blue liquid known as "north sea serum"
VIABLE ANTIDOTE?: TOXIC!!

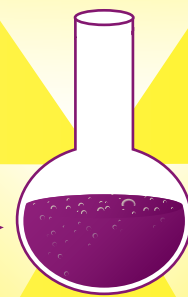


bellwether games llc 2013

Syringe: Exchange this card from your hand for any player's discarded card or hand card you select randomly.

14

bellwether games llc 2013



Round-bottom flask: contains a bubbly purple liquid known as "purple-Q"
VIABLE ANTIDOTE?: UNKNOWN