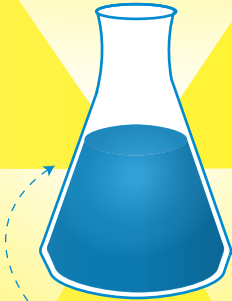


16

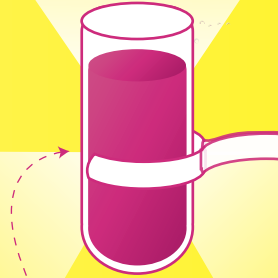
bellwether games llc 2013



Erlenmeyer flask: contains a hazy aqua liquid known as "sapphire princess"
VIABLE ANTIDOTE?: UNKNOWN

16

bellwether games llc 2013



Test tube: Contains a glassy fuschia liquid known as "wild wild rose"
VIABLE ANTIDOTE?: UNKNOWN

11

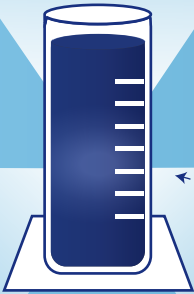
bellwether games llc 2013



Vial: Contains the glassy lime liquid "grendel's dose"
VIABLE ANTIDOTE?: UNKNOWN

16

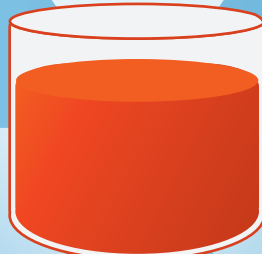
bellwether games llc 2013



Cylinder: Contains a hazy dark blue liquid known as "north sea serum"
VIABLE ANTIDOTE?: UNKNOWN

16

bellwether games llc 2013



Beaker: Contains a glassy orange liquid known as "melted sundial"
VIABLE ANTIDOTE?: UNKNOWN

12

bellwether games llc 2013



Vial: Contains the glassy lime liquid "grendel's dose"
VIABLE ANTIDOTE?: UNKNOWN

15

bellwether games llc 2013



Vial: Contains the glassy lime liquid "grendel's dose"
VIABLE ANTIDOTE?: UNKNOWN

14

bellwether games llc 2013



Vial: Contains the glassy lime liquid "grendel's dose"
VIABLE ANTIDOTE?: UNKNOWN

13

bellwether games llc 2013



Vial: Contains the glassy lime liquid "grendel's dose"
VIABLE ANTIDOTE?: UNKNOWN